

# 2017 Bituminous Street Improvements Becker, Minnesota



BECKR 142102

# Project Update

## Project Team

General Contractor  
Knife River Corporation  
Mike Puhalla  
320.248.8730  
[mike.puhalla@kniferiver.com](mailto:mike.puhalla@kniferiver.com)

## Subcontractors

Allstates Pavement Recycling & Stabilization  
Brandon  
320.290.0489

Doucette's Landscaping  
Steve Doucette  
320.412.6297

Schmidt Curb  
Gus  
320.980.6887

Herbst Excavating  
Jake Herbst  
320.250.2991

SEH Project Representative  
/Construction Observer  
Jerry Siegfried  
320.980.4107  
[jsiegfried@sehinc.com](mailto:jsiegfried@sehinc.com)

City Engineer  
Randy Sabart, PE  
320.229.4348  
[rsabart@sehinc.com](mailto:rsabart@sehinc.com)

City of Becker  
763.200.4239

October 2017 | Project Update No. 2

## Thank You!

The project team would like to thank you for your cooperation on the project to date. Your continued patience and understanding makes difficult construction move ahead much more smoothly. For those of you who have contacted SEH with questions about the project, we will continue to make every attempt to provide answers to you in a timely manner. We encourage you to call or email with questions.

For any questions, Jerry Siegfried, SEH's Project Representative, will be on-site during construction to observe project progress. He is the fastest link to problem solving because he communicates directly with everyone on the construction team. Do not hesitate to contact Jerry with any questions you may have. If you are unable to reach Jerry in the field, please contact Randy Sabart at the SEH office at 320.229.4348.

## Schedule Update

The bituminous street reclamation (pulverizing) has been completed on the west half of the project and the grading of the aggregate base will be completed soon. The removal of the bituminous surface on the east half of the project, bounded by Central Avenue, Sherburne Avenue, and 1<sup>st</sup> Street, will begin the first week of October weather permitted and will only take a few days.

Once the removal of the bituminous surface is complete, it will take 2 to 3 days, weather permitting, to grade each street to prepare for paving the bituminous base course. Please be patient as it takes time to shape the aggregate surface in preparation for paving. Paving of the streets will follow shortly after the aggregate base course is completely graded and compacted.

The T-Town Parking Lot and the Public Works Site are graded and are scheduled to be paved during the first week of October. More information about the process of paving the bituminous base course can be found in the next section.

## Construction of Bituminous Base Course

Remember, bituminous is placed at very hot temperatures (230° F to 265° F). Fresh bituminous will stick to your shoes, clothes, and just about anything it comes in contact with. Please be aware of the dangers of hot pavement and avoid walking, skate boarding, or riding bicycles on the fresh pavement. To avoid unnecessary damage to your floors, check the soles of your shoes before entering your home.

The contractor will use a pneumatic roller to compact the bituminous immediately after placement by paving machine. All traffic will be kept off the pavement until the compaction work is complete and a short cooling period has passed. Please try to avoid making sharp turns or sudden stops and starts with your automobile. Your cars' tires can damage the soft pavement.

## URGENT.....

### IMMEDIATE ATTENTION NEEDED

#### Special Information

It is very important that anyone with special needs or disabilities contact us as soon as possible. We are in the process of working with emergency response organizations to locate any residences that may have a special need so we are fully aware of the issues throughout construction and if quick response is needed to any specific residence(s), there is a plan in place. Contact Jerry Siegfried with SEH at 320-980-4107.

#### Preservation of Construction Stakes and Utility Flags....We need your help!

Please do not remove any wooden stakes you will see temporarily placed on the boulevards. These stakes are used by the Contractor to construct the project and are expensive to replace.

Also, please do not remove or relocate the colored utility location flags. These flags, in conjunction with the spray paint markings on the ground, are necessary for the Contractor to locate buried utilities. We understand these flags may be unsightly and difficult to mow around, but we need your help to protect the construction crews and residents in your neighborhood.

Your help in keeping bystanders away from the construction area will ensure the project will progress safely.

## Frequently Asked Questions

**Q:** *What kind of activity can I expect during construction?*

**A:** Construction is tedious and we understand it can get old quickly. At times, it may even seem like not much is getting done. Remember, patience is the biggest asset that each of you bring to the job. If you keep in mind the fact that this project will be completed, hopefully construction will seem to go faster for you!

In addition to the General Contractor, there will be several subcontractors working at various times on site. There may also be private utility companies (gas, cable television, telephone, and electric) on the site locating or moving existing lines. Please bear with us, the General Contractor has a fixed amount of time to get the work done, and we will be working with all parties involved to help see that this time commitment is met.

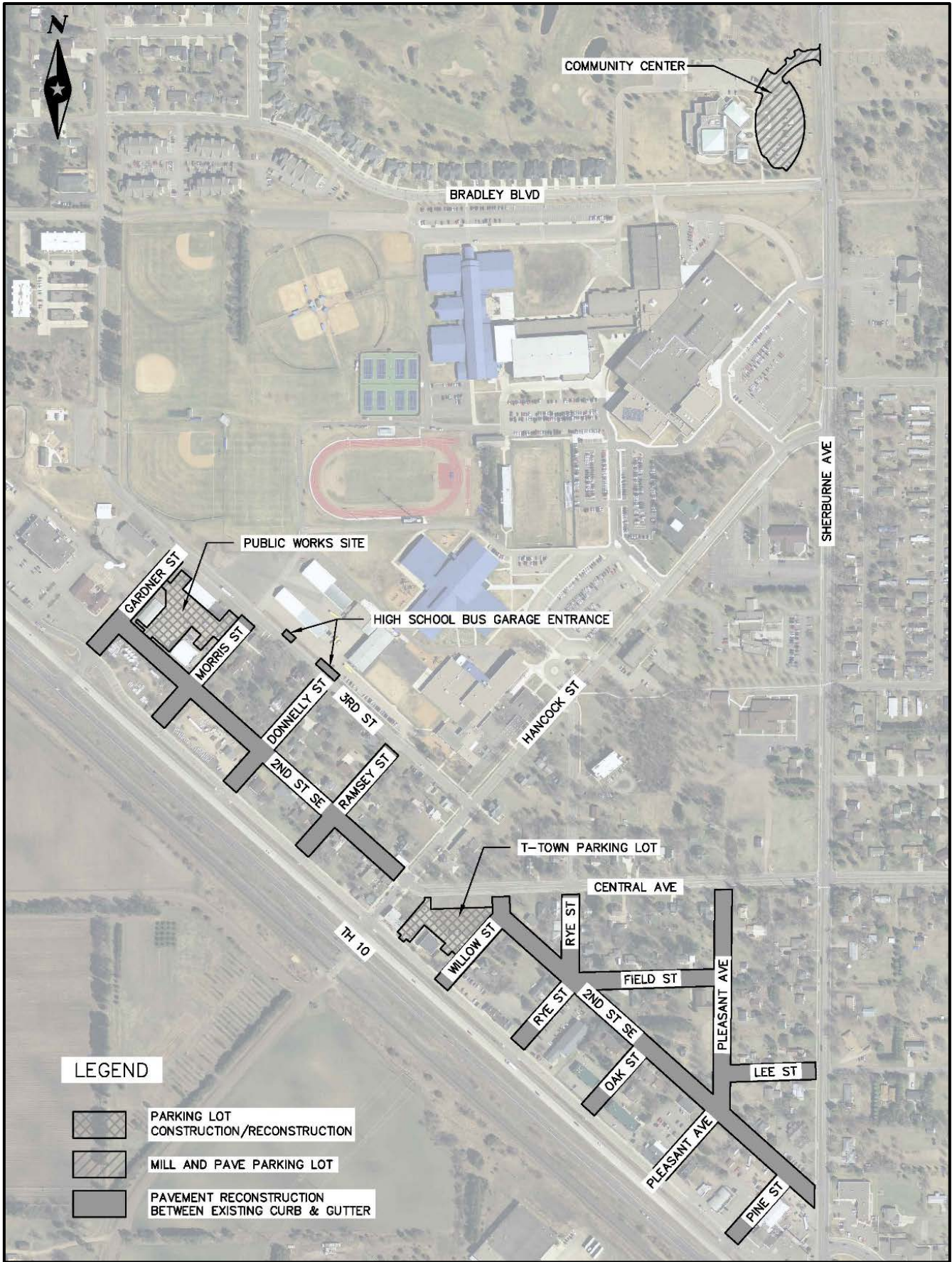
**Q:** *Who do I call if I have a question?*

**A:** Please call SEH's Project Representative, Jerry Siegfried, at 320.980.4107 if you have a question regarding the project.



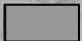
**Q:** *How will I receive my mail during construction (not applicable for PO boxes)?*

**A:** If the Contractor is unable to work with the existing mailboxes in place and maintain postal access, the Contractor will temporarily remove your individual mailbox and post. The Contractor will then install temporary mailbox banks at a location(s) directed by the Postmaster. Your mail will be delivered to the mailbox banks until construction is complete. You will receive notice when your mail service will return to normal.

# Project Location Map



## LEGEND

-  PARKING LOT CONSTRUCTION/RECONSTRUCTION
-  MILL AND PAVE PARKING LOT
-  PAVEMENT RECONSTRUCTION BETWEEN EXISTING CURB & GUTTER

## Construction Zone

Barricade and road closure signs may be installed throughout the project area to protect motorists during construction. Please pay careful attention to the warning signs! "Road Closed" signs are used where the road is impassable and closed to all traffic except for the Contractor's equipment or officially authorized vehicles. "Road Closed to Thru Traffic" signs are used where through traffic must detour to avoid a closure some distance beyond the sign, but where local traffic can move up to the point of closure. In this instance, local traffic would be defined as residential traffic from the particular street under construction.

There will also be brief times during construction that direct access to your driveway will be limited, particularly when fresh, hot bituminous is being constructed. Access to your property is important to us, and Contractor will work to minimize those times that access must be limited.

As the Contractor's operations move during the course of construction, you may observe that signs and barricades move as well. We understand this may be frustrating! Please allow extra time in your schedule as you drive through the construction zone. Please advise your family and guests to exercise caution and safe driving speeds. Be sure workers and heavy equipment operators see you before driving around them.

Short Elliott Hendrickson Inc.  
1200 25th Avenue South  
P.O. Box 1717  
St. Cloud, MN 56302-1717



## Project Update

**2017 Bituminous Street Improvements  
Becker, Minnesota**