

2022 Street Improvements Becker, Minnesota

Project Update



BECKR165082

Project Team

General Contractor

Company
Contact
XXX.XXX.XXXX
email@yahoo.com

Subcontractors

Concrete Flatwork
Company
Contact
XXX.XXX.XXXX

Grading & Reclamation

Company
Contact
XXX.XXX.XXXX

Turf Establishment

Company
Contact
XXX.XXX.XXXX

Traffic Control

Company
Contact
XXX.XXX.XXXX

SEH Project Representative /Construction Observer

Jerry Siegfried
320.980.4107
jsiegfried@sehinc.com

Project Engineer

Randy Sabart, PE
320.229.4348
rsabart@sehinc.com

July 2022 | Project Update No. 1

Hello and welcome to the *2022 Street Improvements Project Update*. In this and upcoming issues, we will be updating you on the project status.

The project team consists of the City of Becker, SEH, and OMG Midwest. SEH is the municipal engineering firm that serves as City Engineer for the City of Becker and will serve as the contact between the Contractors and residents.

We hope to provide accurate answers to your questions and concerns in a timely manner. However, when more than one team member needs to be consulted, it may take a little longer to provide you with accurate and up-to-date information.

Jerry Siegfried, SEH's Project Representative, will be on-site during construction to observe project progress. He is the fastest link to problem solving because he communicates directly with everyone on the construction team. Do not hesitate to contact Jerry with any questions you may have. If you are unable to reach Jerry in the field, please contact Randy Sabart at the SEH office at 320.229.4348.

Project Status

The City of Becker awarded the construction contract to OMG Midwest. OMG Midwest is the General Contractor who will be responsible for constructing the street resurfacing improvements.

Weather depending, the Contractor is scheduled to begin work the week of **July 25, 2022**. Initial construction will include equipment mobilization, traffic control set-up, and erosion control set-up. The Contractor will continue work on the pavement removals and bituminous reclamation (pulverization) throughout the week.

Description of Project

The street reconstruction phase of the project consists of reclaiming (pulverizing) a section of the existing street pavement, excavating (salvaging) the pulverized materials, excavating a portion of the existing road base, and then finally constructing new layers of (salvaged) gravel and bituminous pavement. The process will allow the City to increase the structural load capacity of the street pavement. This process will take place Sherburne Avenue, Prosperity Avenue, Commerce Drive, Bank Street, Rolling Ridge Road, & River Street.

Pedestrian ramp improvements along Bank Street, Rolling Ridge Road, and River Street will be constructed where sidewalk exists at street intersections.

**URGENT!
IMMEDIATE ATTENTION
NEEDED**

Special Information

It is very important that anyone with special needs or disabilities contact us as soon as possible. We are in the process of working with emergency response organizations to locate any residences that may have a special need so we are fully aware of the issues throughout construction and if quick response is needed to any specific residence(s), there is a plan in place. Contact Jerry Siegfried with SEH at 320.980.4107.

**Preservation of
Construction Stakes and
Utility Flags....We need
your help!**

Please do not remove any wooden stakes you will see temporarily placed on the boulevards. These stakes are used by the Contractor to construct the project and are expensive to replace.

Also, please do not remove or relocate the colored utility location flags. These flags, in conjunction with the spray paint markings on the ground, are necessary for the Contractor to locate buried utilities. We understand these flags may be unsightly and difficult to mow around, but we need your help to protect the construction crews and residents in your neighborhood.

Your help in keeping bystanders away from the construction area will ensure the project will progress safely.

Frequently Asked Questions

Q: *What kind of activity can I expect during construction?*

A: Construction is tedious and we understand it can get old quickly. At times, it may even seem like not much is getting done. Remember, patience is the biggest asset that each of you bring to the job. If you keep in mind the fact that this project will be completed, hopefully construction will seem to go faster for you!

In addition to the General Contractor, there will be several subcontractors working at various times on site. There may also be private utility companies (gas, cable television, telephone, and electric) on the site locating or moving existing lines. Please bear with us, the General Contractor has a fixed amount of time to get the work done, and we will be working with all parties involved to help see that this time commitment is met.

Q: *Who do I call if I have a question?*

A: Please call SEH's Project Representative, Jerry Siegfried, at 320.980.4107 if you have a question regarding the project.

Q: *What will happen to my **sprinkler system** or **pet containment system** during construction?*

A: Because the proposed improvements are primarily street resurfacing improvements between the existing curbs, it is anticipated impacts to sprinklers or pet containment systems behind the back of the curb will be minimal. However, property owners on street corners with a sidewalk, particularly, who have a sprinkler system or pet containment system in the right-of-way and next to the edge of curb and gutter, the edge of the roadway, or the sidewalk are encouraged to contact Jerry Siegfried at 320.980.4107 to inquire on potential impacts. It may be necessary for you to temporarily remove a portion of your sprinkler or pet containment system within the public right-of-way or public easement area. The sprinkler distribution pipes should be exposed and pulled up to the property line so they are visible to the Contractor. Since the sprinkler heads are often the most expensive component of the system, consider removing them from the distribution pipes. Apply duct tape to the end of the pipes to keep out dirt and debris. The City and Contractor will not be liable for damage to sprinkler systems that are installed within the public right-of-way. Residents should reinstall the systems after the turf restoration work is complete.

Q: *How will I receive my mail during construction (not applicable for PO boxes)?*

A: During construction, the mailboxes may be removed and replaced by the Contractor with temporary mailbox banks at a location(s) directed by the Postmaster. Your mail will be delivered to the mailbox banks until construction is complete. Following construction, city-standard mailbox bank clusters will be installed. You will receive notice when your mail service will return to normal.

Q: *What if I want to reconstruct my private driveway?*

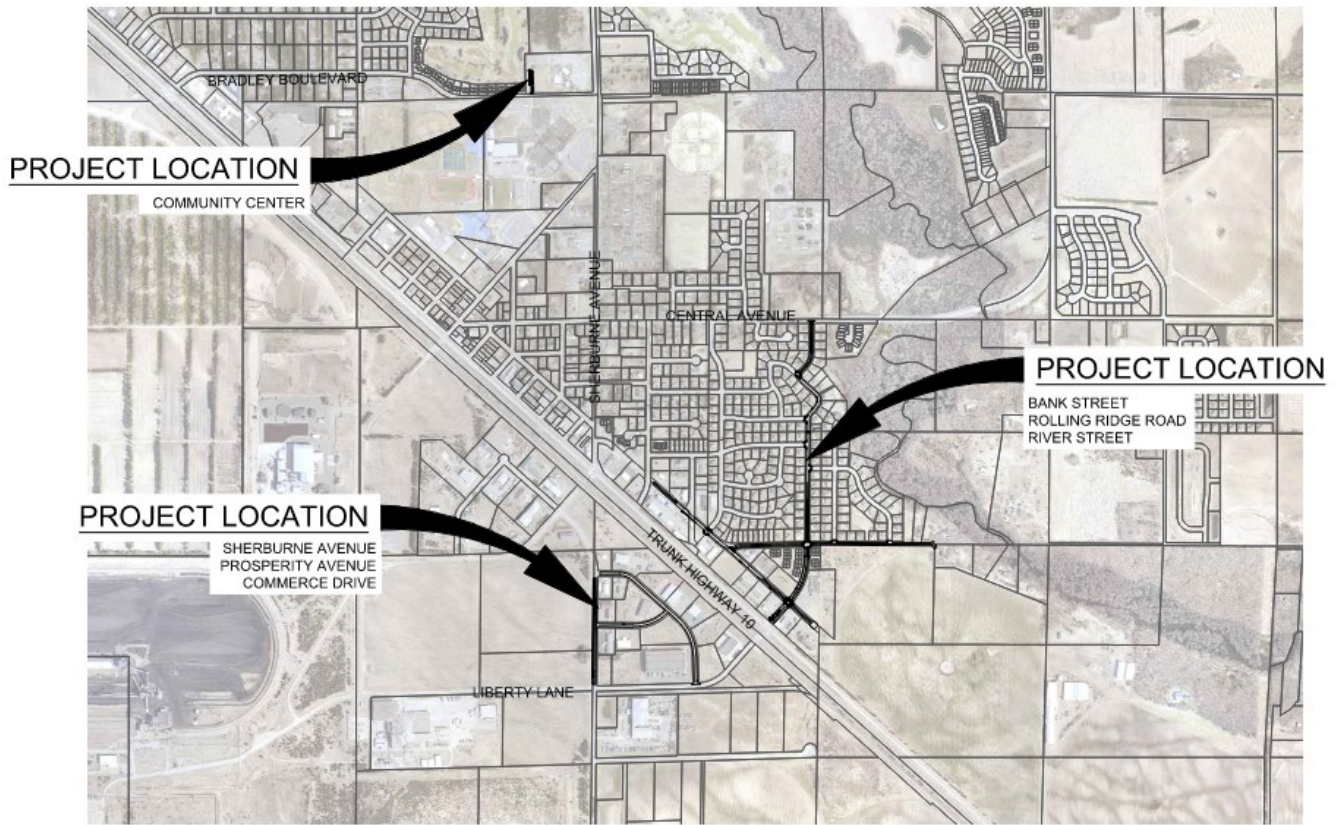
A: Property owners may replace their driveway pavements in conjunction with the overall City project. Property owners may contact the general contractor (contact information listed on front page) for proposals for private driveway reconstruction. If you proceed with driveway replacement, we ask that you alert our project representative, Jerry Siegfried, so proper coordination of the City's contractors can occur. Please note, there is no obligation on the City's contractor to perform any private reconstruction.

Mailboxes

The project includes plans to replace all mailboxes with swing away mailboxes.



Project Location Map



Construction Zone

Barricade and road closure signs may be installed throughout the project area to protect motorists during construction. Please pay careful attention to the warning signs! "Road Closed" signs are used where the road is impassable and closed to all traffic except for the Contractor's equipment or officially authorized vehicles. "Road Closed to Thru Traffic" signs are used where through traffic must detour to avoid a closure some distance beyond the sign, but where local traffic can move up to the point of closure. In this instance, local traffic would be defined as residential traffic from the particular street under construction.

There will also be brief times during construction that direct access to your driveway will be limited, particularly when fresh, hot bituminous is being constructed. Access to your property is important to us, and Contractor will work to minimize those times that access must be limited.

As the Contractor's operations move during the course of construction, you may observe that signs and barricades move as well. We understand this may be frustrating! Please allow extra time in your schedule as you drive through the construction zone. Please advise your family and guests to exercise caution and safe driving speeds. Be sure workers and heavy equipment operators see you before driving around them.

Short Elliott Hendrickson Inc.
P.O. Box 1717
St. Cloud, MN 56302-1717



Project Update

2022 Street Improvements
Becker, Minnesota